

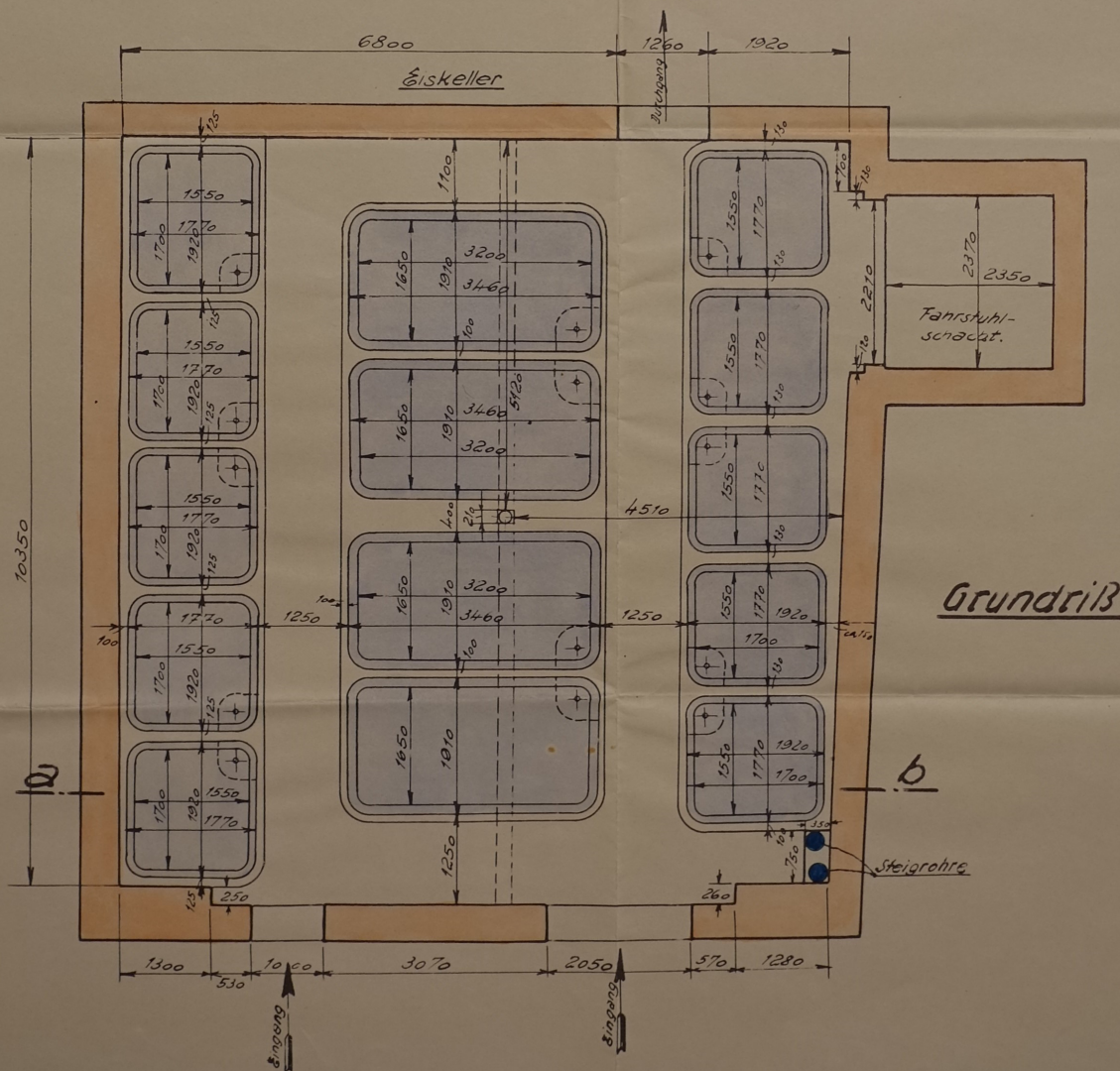
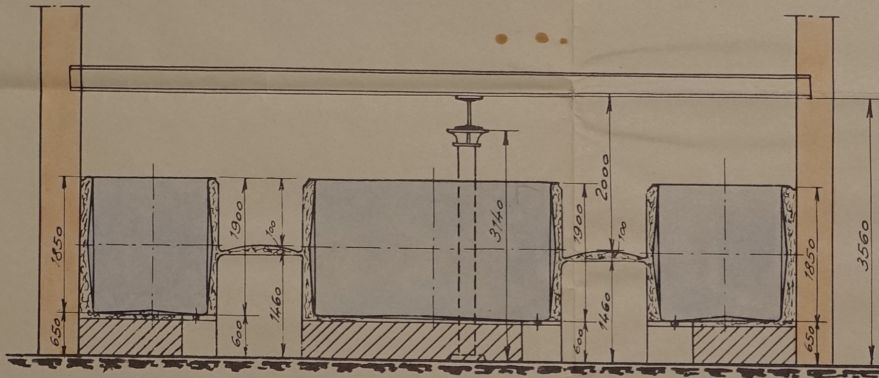
# Gastwirte - Genossenschaftsbrauerei e.G.m.b.H.

Malsfeld / Hess.-Nassau. M. 1/150

10 Gärbottiche 1700 · 1550 · 1900/1850 hoch je 50 hl ca. 1280 kg. 10/11  
 4 " 3200 · 1650 · 1900/1850 " je 100 hl. ca. 2100 kg. 10/11

ZUS. 900 hl.

Schnitt a-b



G. 5478.



10392