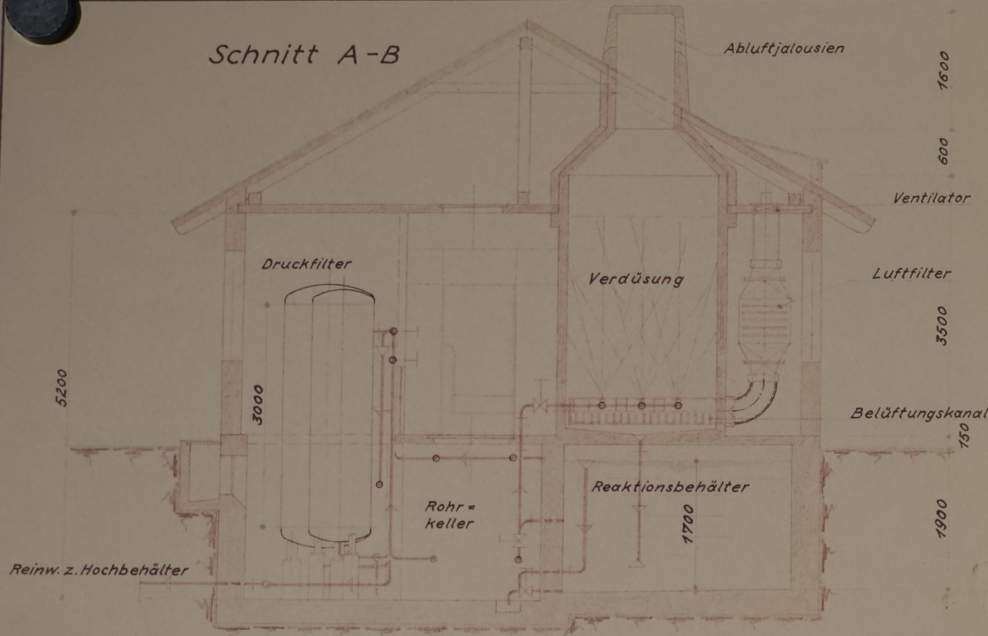
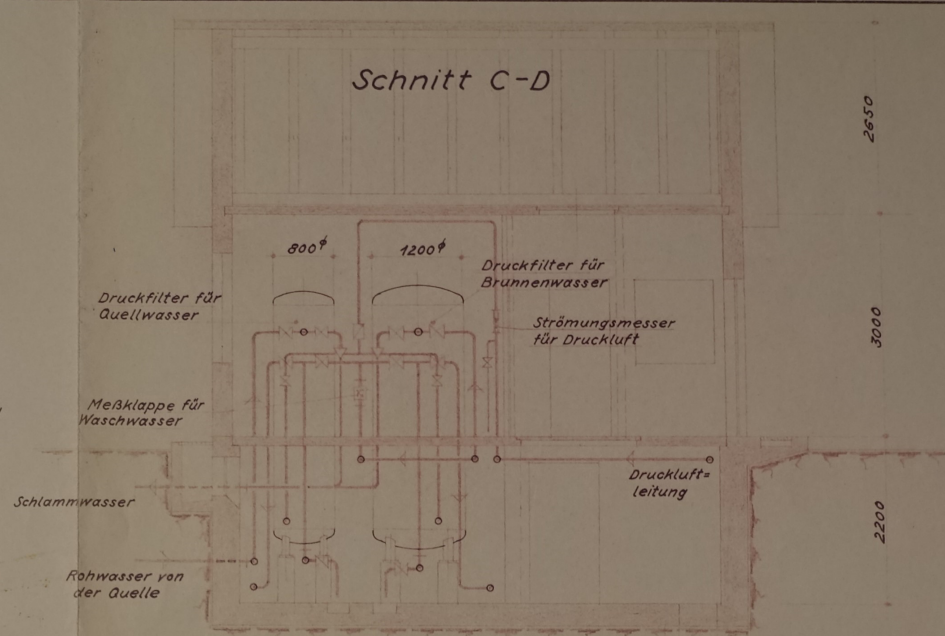


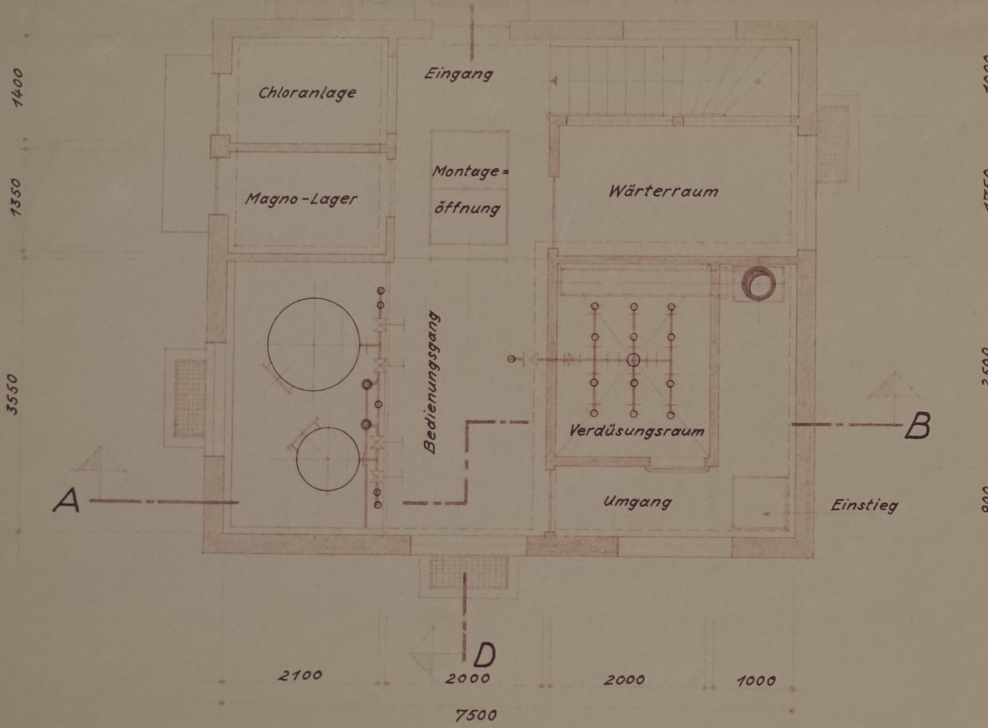
Schnitt A-B



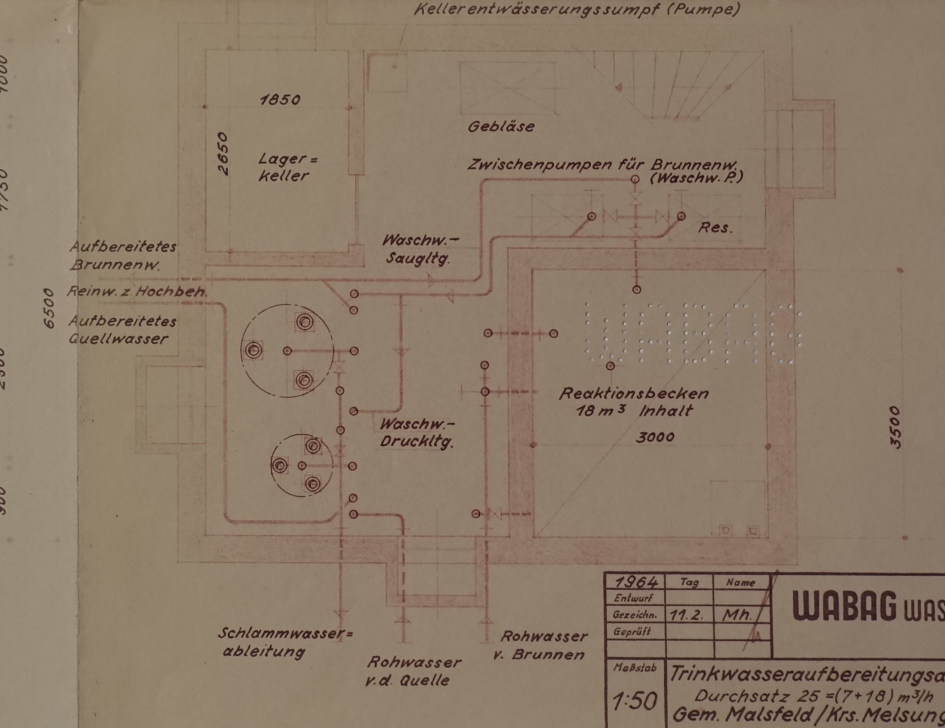
Schnitt C-D



Erdgeschoß



Kellergeschoß



1964	Tag	Name
Entwurf		
Geszeichn.	11.2.	Mh.
Geprüft		

**WABAG WASSERREINIGUNGSBAU**  
KULMBACH

Maßstab	Trinkwasseraufbereitungsanlage	Kp 65588
1:50	Durchsatz 25 = (7+18) m³/h	
	Gem. Malsfeld / Krs. Melsungen	ApNr.-2-17302/63